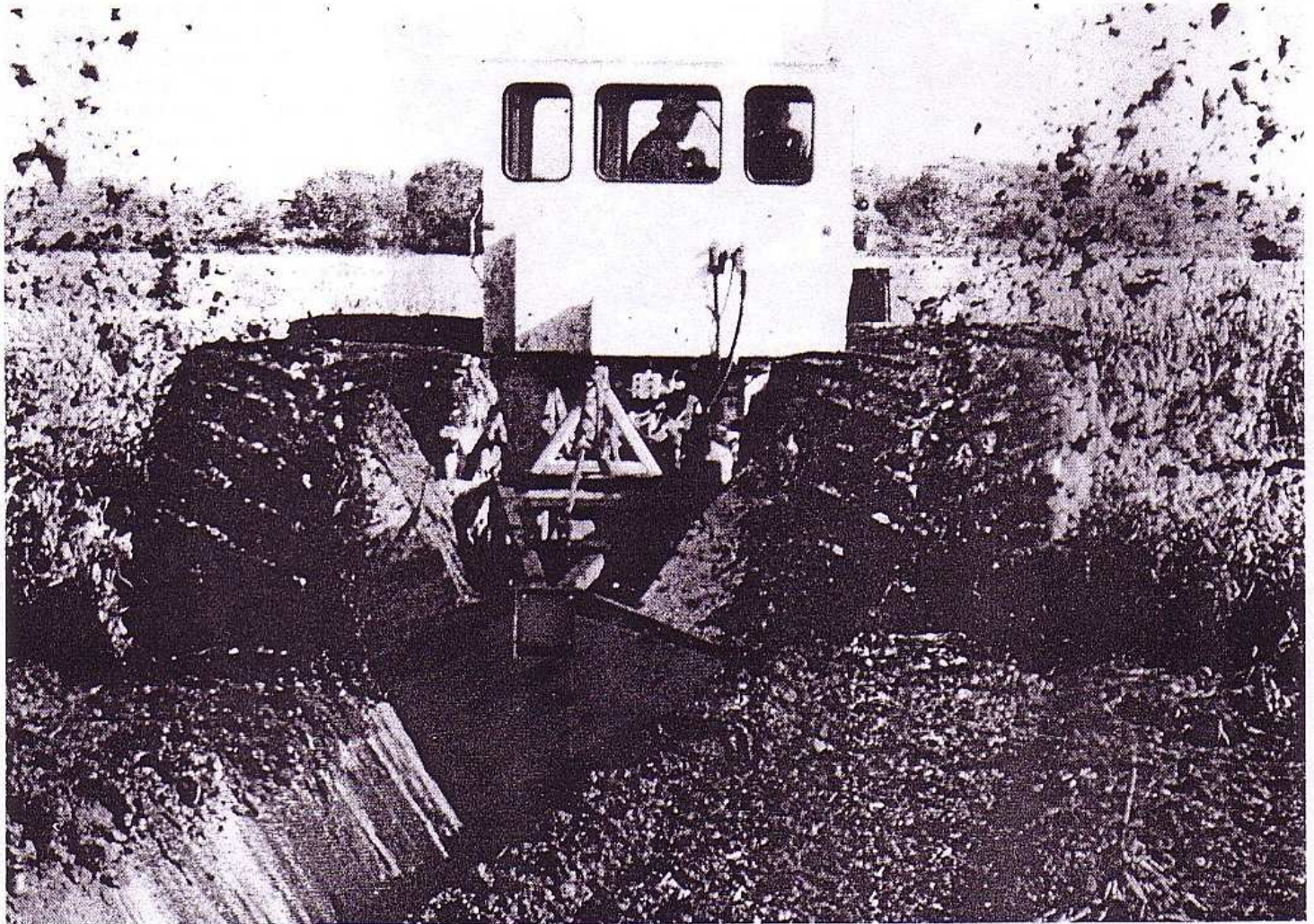


GEMCO-Rotary Ditcher

Amphibious, Articulated 4 × 4 Tractor with Rotary Ditcher



THE ULTIMATE WATER MANAGEMENT TOOL!

Backed by more than 30 years of experience, the GEMCO family of high flotation transport vehicles provides maximum buoyancy to maneuver over and through the most marginal terrain conditions.

Engineered for low-cost operation, GEMCO ditchers are at work in dredge disposal areas, mining tailing sites, mosquito control programs and waterway management projects. This versatile vehicle easily handles a variety of implements, including backhoes, disks and hydraulic blades. Highly maneuverable, it can ditch while turning and has a top speed of 15 m.p.h.

The combination of features offered in the GEMCO Rotary Ditcher results in the most productive, versatile and cost-efficient machine available today.

GEMCO

When the only road is no road
Go GEMCO

A new four-wheel-drive amphibious tractor-mounted rotary ditcher has been designed and produced by Gemco Equipment Company (United States). Designated the Gemco Ditcher, the vehicle combines the Gemco GT-150 hydrostatic-drive fully articulated 4 by 4 tractor with the Dondi Model 75 double-wheel rotary ditcher, also hydrostatically driven.

The ditcher is capable of digging a trapezoid-shaped trench up to 68 inches wide and 40 inches deep in wet or dry soil conditions. The vehicle has a turning radius of 25 feet while ditching and the ditcher assembly is capable of operating while totally submerged. The ditching speed will vary from 1,500 feet to 4,000 feet per hour, depending on the soil condition.

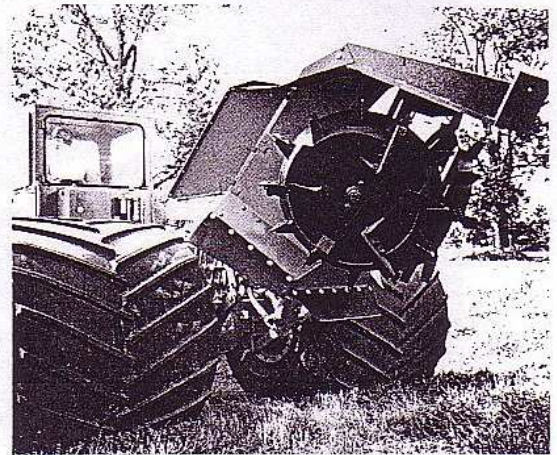
Equipped with Gemco Super Float tyres mounted on flotation wheels, the unit is totally amphibious and can traverse inland waterways. It is operating successfully in dredge disposal sites, mining tailings and slurry ponds.

Gemco.





Tractor with Enclosed Cab



The Rotary Ditcher Head

Check these outstanding features:

- Low Operating and Maintenance Costs
- Designed for One-Man Operation
- Low Ground Pressure (1.5 PSI)
- Vehicle is Totally Amphibious

- 15 M.P.H. Top Speed. Instant Forward and Reverse
- Compact Design for High Maneuverability
- Both Tractor and Ditcher are Hydrostatically Driven
- Four Wheel Drive, Front and Rear No-Spin Differential
- Articulated Full Power Hydraulic Steering

SPECIFICATIONS

GEMCO 4x4 Hydrostatic Drive, Fully Amphibious, Articulated Steering Tractor with Rotary Ditcher

Engine: Model 6V53T Turbocharged Detroit Diesel. Water Cooled, 233 H.P., with Dry-Type Air Cleaner, Muffler, 30° Oil Pan, SAE-2 Flywheel and Housing.

Transmission: Hydrostatic Drive System giving Infinite Speed Variations in Four Gear Ranges. Instant Forward and Reverse Shuttle in all four ranges. 0-15 M.P.H. Speed Range. 14" Transmission Hand Emergency Brake.

Axles: Planetary Axles. All Wheel Drive with No-Spin Differential in Front and Rear.

Steering: Articulated Full Power Hydraulic Steering with Dual 2½" Steering Cylinders. Pivot 40° either side of Center. Frame Oscillation Pivot ± 22° from Horizontal.

Fuel Tank: 50-Gallon Capacity.

Hitch: SAE Category II, 3 Point.

Electrical System: 12-Volt Electrical System with Heavy-Duty Battery. Keyed Ignition and Locking Battery Box.

Winch: Hydraulic 15,000-lb. Capacity Rear Winch with 500 Feet of ¾" Cable and Tail Chain. Locking Cockpit Control.

Cab: Totally Enclosed One-Man Cab with Steering Console: Controls and all Gauges Mounted Inside.

Tires and Wheels: Four 66" x 68" x 24" GEMCO Super Float 4-Ply Tires mounted on Flotation 8-Hole Wheels.

Tractor Dimensions (including Ditcher)

Length	23' 6"	Ground Clearance	22½"
Width	15'	Weight	14,400 lbs.
Height	9' 11"	Ground Pressure	1.5 PSI at 2"

Turning Radius: 25 Feet, while Ditching.

Rotary Ditcher: Hydrostatically Driven. Capable of Digging a Trapezoid-Shaped Trench to approximately 52" in Wet or Dry Conditions. Capable of Operating while Totally Submerged.

Options: Backhoe; Insulated Cab; Air Conditioner; Heater; Vandal Protection; 6-Ply Tires.

This brochure shows one of the basic tractors presently manufactured by GEMCO. For up-to-date information on our other vehicles or any of your specialized equipment requirements, please contact us.

GEMCO

EQUIPMENT COMPANY

P.O. Box 36278, Houston, Texas 77236
(713) 498-0030 Telex 792-433